

# 700 SERIES

The Power of Versatility

**STAT**  
BUSINESS SYSTEMS

An All Florida Technologies, Inc Company

1-800-407-STAT (7828)

[www.statbusiness.com](http://www.statbusiness.com)



# 700 SERIES

- Standard top stacking
- Optional rear stacking or KIPFold
- NEW 15.6" smart tablet-like touchscreen
- KIP Contact Control Technology
- Compact by design
- KIP System K Print Management Suite
- Single Pass Black for B&W printing
- Full CMYK for Color printing
- Quick Switch between rolls and stacking locations
- Fast media installation with Simple end cap design
- Auto roll switching provides less user intervention
- Fast print production when you need it most
- Consistent print quality

**WHEN YOU  
NEED TO MAKE AN  
IMPRESSION**



## **Contact Control** **Precision Imaging**

KIP 700 C Series systems utilize Contact Control Technology (CCT), the ultimate wide format imaging solution. The ability to control the placement of the toner particles through direct contact at every stage of image development ensures the highest level of accuracy and precision quality in the production of every color or black & white image.

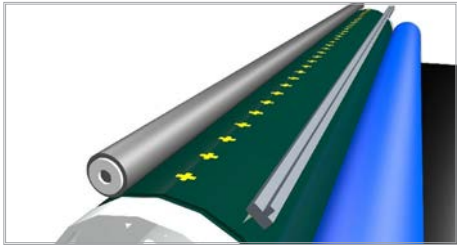
Advanced toner technology controls the image with color registration that delivers smooth color and expressive black & white image quality. True black printing ensures bold rich lines and fine details with pinpoint accuracy that are easy to read.





# State of the Art Toner Technology

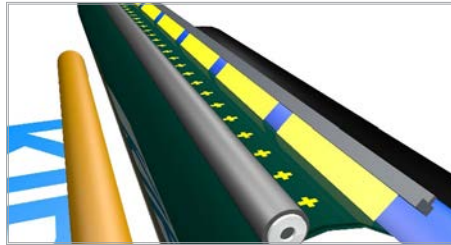
## Contact Array Charging Technology (CAC)



Direct contact for consistent electric charge over the entire surface of the organic photoconductor.

- Stabilizes image quality
- Eliminates multiple system parts to include corona wires, cleaning pads, grid screens, filters and related airflow fans to reduce maintenance visits
- Eliminates ozone

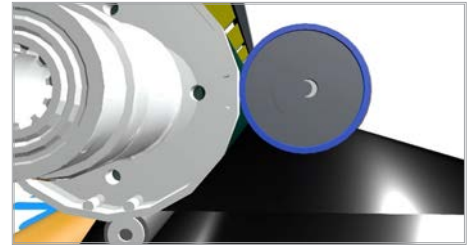
## Calibrated LED Array



The calibrated LED print head creates a uniform latent image and includes KIP's Image Smoothing Technology.

- Precision tuned for luminance to generate high quality text
- Smooth, consistent color shading & grayscales

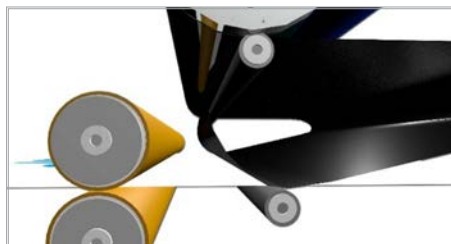
## Contact Development



Direct application of toner without "developers" results in pinpoint placement on the photoreceptor's latent image. Advancements in system components further enhance image quality.

- Uniform pixel creation
- Produces improved print quality

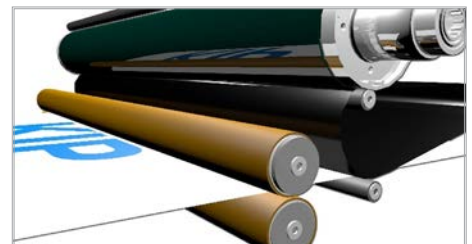
## Contact Transfer



Transfers the image onto the media with precise alignment for accurate color registration through direct contact.

- Superior color registration
- Maintains sharp lines & legibility of text

## Contact Pressure Fusing

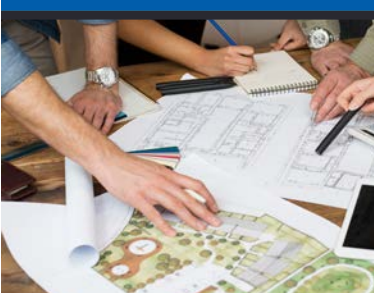


Heat & pressure fusing ensures permanent, high durable images.

- Highest durability
- Waterproof images
- Lightfast
- Streak free, fluorescent marker use



# 700 C SERIES



## When choosing a new print system **Every Detail Matters**

It's not just one component that makes a great print system, it's a combination of features and benefits that create a dependable print system.

KIP's consistent speed technology ensures there is never a delay when printing complex files or high coverage images. Every document is printed at full rated engine speed ensuring that schedules and timelines are met day after day.

Workflow Automation simplifies everyday multi-step printing processes. Produce sets of black & white, color, or mixed sets of images and automatically, size, rotate or collate with touch of your fingertips

Protecting your investment, your data and your time are primary factors we build into the design and delivery of our products. Accessibility to engine performance, toner & media requirements, and overall system health are easily accessed via touchscreen, desktop, or web applications.

From our powerful print engines and smart software technology to our incredible image quality we have designed a KIP 700 C Series to meet the demands of today and tomorrow's print requirements.



**Low Volume**  
6 B&W | 6 Color\*



**Mid Volume**  
8 B&W | 6 Color\*



**High Demand**  
12 B&W | 10 Color\*

## The benefits of **Versatility**

- Three Models - Low, Mid & High Volume
- Three Production Speeds
- Twelve Product Configurations
- Best in Class Technology
- True Touch Productivity
- Industry Leading Software – KIP System K  
Smart Printing | Data Protection | System Wide Reporting

# The Power of Versatility



**PRINT SYSTEMS**



**MULTIFUNCTION SYSTEMS**



**PRODUCTION SYSTEMS**

**730**



**740**



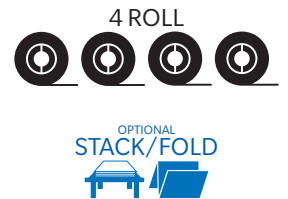
**750**



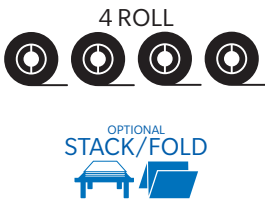
**760**



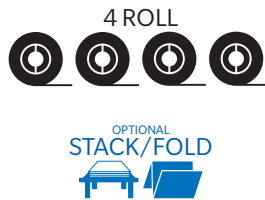
**790**



**770**



**780**



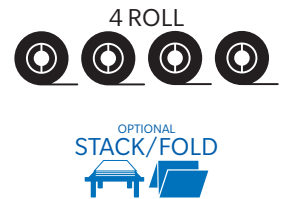
**755**



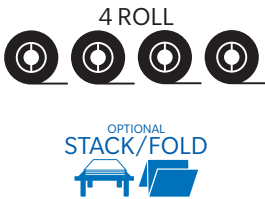
**765**



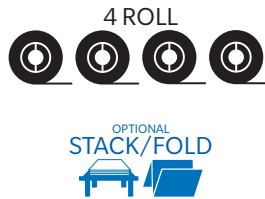
**795**



**775**



**785**



\*All speeds represent D / A1 size prints per minute

# TRUE SMART TABLET PRODUCTIVITY

PRINT, COPY & SCAN BRILLIANTLY



  
**NEW 15.6"**  
**Touchscreen**

The NEW 15.6" KIP touchscreen has true smart tablet easy function and offers unmatched productivity with intuitive features to brilliantly automate Print, Copy, and Scan workflow.



**PRINT**



**COPY**



**SCAN**

- Maximize efficiency — Copy and print or scan and print at the same time
- Interrupt large print runs for quick one-off prints or copies
- KIP's Area of Interest on-screen editing let's you quickly print only the section of information you need
- KIP Cloud Connect let's you print from or scan to cloud services for project collaboration anytime, anywhere
- Pictorial user guides & QR code for videos
- Automate workflow with template creation
- One-touch access to features in 12 languages

True smart tablet function  
that is easy for new or  
experienced users



Intuitive Feature  
Selection



Real-time Image Preview with  
Area of Interest Image Editing



Auto De-skew for  
Copy & Scan



Access Job History  
for Easy Reprint of Jobs



Pictorial Feature &  
Operator Guide



KIP Smart Link QR Code Access to Operator  
Guides for Smart Phones

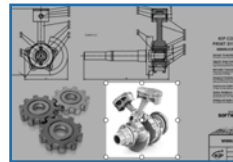
# KIP System K Software

KIP System K Software Suite offers unmatched flexibility for printing projects.

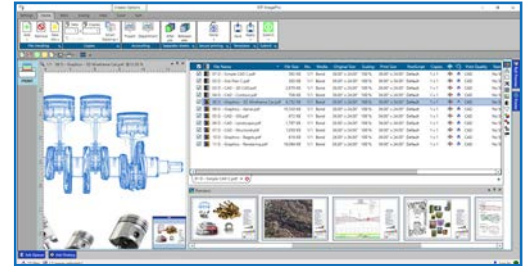


## KIP ImagePro

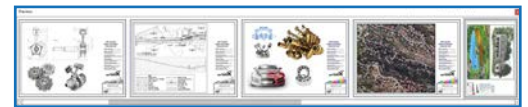
- Driverless PC App Printing
- High Definition Image Viewer with thumbnail preflight view
- Workflow Automation Templates
- Easily combine single or multi-page files from one or more file locations into a collate set
- Area of Interest for image editing
- Drag/drop and cut/paste to reorder
- Realtime access to manage print queue to maximize job priority with live printer status
- Control image scaling by percentage or single click automation to preferred page size
- Unlimited Site License — no servers or licensing required



Area of Interest (AOI)



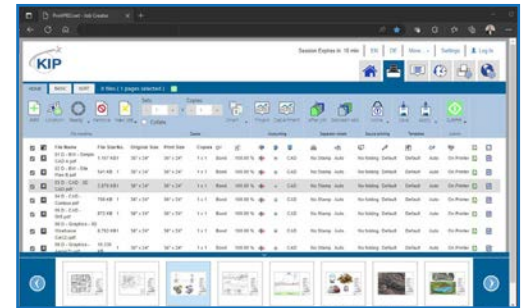
HD Viewer



Pre Flight Thumbnail Viewer

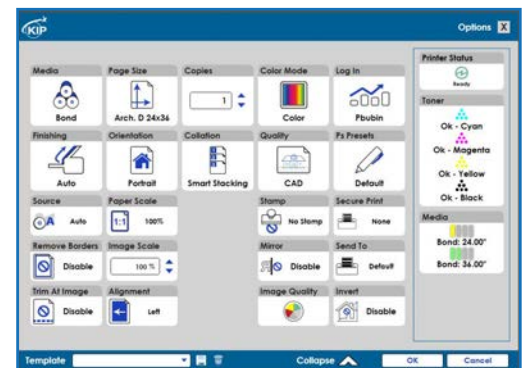
## KIP PrintPro.net

- Driverless browser printing submission tool — No application or installation required
- Supports Windows, Unix, and MAC OS browsers for full control over printing parameters
- Remote printer administration and queue management
- Frees up PC, fast print job processing on KIP System K Controller
- Control image scaling by percentage or one touch automation to preferred page size
- Unlimited site license, no server or licensing required — best for small work groups



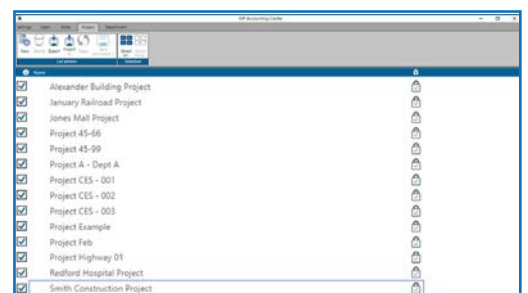
## KIP Windows Driver

- Microsoft WHQL Certified
- Windows 10/11 — 32 and 64 bit operating systems
- Use from a variety of Windows based programs including Adobe, Office and CAD Applications
- Single Source Installation — No need to install multiple drivers
- Workflow Automation Templates
- Easily view and manage Job Queue and Job History with real-time printer status



## KIP Accounting and Cost Center (Optional)

- Track projects and printing costs. KIP Accounting allocates print and copy volumes to departments and projects.
- Easily, print or email visually attractive reports for copy, print and scan production directly from the application.
- Enhance print system access and security
- Track Copy/Scan/Printing
- Control user features including queue management (plus many more)
- LDAP import of user information



# 700 C SERIES SPECIFICATIONS



Scan to watch videos & get more KIP 700 C Series info



or visit: [www.KIP.com/700](http://www.KIP.com/700)

## System Overview

### Low Volume

### Mid Volume

### High Demand

Description and Productivity	6 B&W/min   6 Color/min			8 B&W/min   6 Color/min				12 B&W/min   10 Color/min			
	Top Stacking Standard			Top Stacking Standard / Rear Stacking Optional				Top Stacking Standard / Rear Stacking Optional			
Wide Format	Model	Rolls	System	Model	Rolls	System	Footprint	Model	Rolls	System	Footprint
Monochrome & Color Printers	730	2	Print	750	2	Print	Single	755	2	Print	Single
Multifunction - Copy/Print/Scan	740	2	Multifunction	760	2	Multifunction	Single	765	2	Multifunction	Single
				770	4	Print	Single	775	4	Print	Single
				780	4	Multifunction	Single	785	4	Multifunction	Single
				790	4	Multifunction	Dual	795	4	Multifunction	Dual

Type / Technology	Electrophotographic LED with organic photoconductor (OPC) utilizing CMYK dry toner KIP Contact Control Technology with KIP Contact Array Charging, KIP Quick Switch Technologies, KIP Image Smoothing Technologies										
Warm Up Time	Instant from standby										
Dimensions <small>Excludes touch screen and top-front trays</small>	730 / 750 / 755	59" (w) x 41" (d) x 35" (h) / 1500mm (w) x 1035mm (d) x 888mm (h)									
	740 / 760 / 765	59" (w) x 41" (d) x 41" (h) / 1500mm (w) x 1035mm (d) x 1038mm (h)									
	770 / 775 / 790 / 795	59" (w) x 41" (d) x 45" (h) / 1500mm (w) x 1035mm (d) x 1138mm (h) For 790 / 795 also refer to and include KIP 2300 Scanner									
	780 / 785	59" (w) x 41" (d) x 51" (h) / 1500mm (w) x 1035mm (d) x 1288mm (h)									
Weight	730	816 lb. / 370 kg		760 & 765	910 lb. / 413 kg		790 & 795	992 lb. / 450 kg			
	740	865 lb. / 392 kg		770 & 775	992 lb. / 450 kg		Note: For 790, 795 refer to and include KIP 2300 Scanner Specifications				
	750 & 755	857 lb. / 389 kg		780 & 785	1045 lb. / 474 kg						
Electrical Requirements	208-240V +6%/-10%, 50/60Hz, 14A Note: For 790, 795 refer to and include KIP 2300 Scanner Specifications										
Power Consumption (Standby)	600W Note: For 790, 795 refer to and include KIP 2300 Scanner Specifications										
Power Consumption (Printing)	1,500W Note: For 790, 795 refer to and include KIP 2300 Scanner Specifications										
Power Consumption (Sleep)	3W Note: For 790, 795 refer to and include KIP 2300 Scanner Specifications										

## Printer

Print Resolution	600 dpi x 2400 dpi
Output Delivery	Standard: Top Stacking - up to 100 documents based on size & media type (default: 50 for 20# / 75gsm paper) Optional: Rear Stacking - up to 700 mixed size pages (based on media type and printer model)
Roll Capacity	500' / 150 m Rolls (2 Roll or 4 Roll)
Output Sizes Width	11" - 36" / 297 mm - 914 mm (3" Core - industry standard widths)
Output Sizes Length	19.7' / 6m (extendable to 82' / 25m based on media type)
Media Types	See KIP Media Guide

## Controller

Controller Type	System K Embedded, Microsoft® IoT Enterprise
Memory	4GB DDR4 Standard (Upgradable)
Solid State Drive	Minimum 256 GB (Upgradable)
Supported File Type	PDF, PDF-A, HPGL 1/2, HP-RTL, CALS Group 4, TIFF Group 4, CIT/TG4, Grayscale TIFF, TIFF Packbits, PNG, JPEG

## Scanner

Scanner Type	Embedded CIS: KIP 740 / 760 / 765 / 780 / 785   KIP 2300 CCD External (dual footprint): KIP 790 / 795
Scan Resolution	600 dpi
Scan Format	PDF, PDF-A, Multipage PDF, TIFF, Multipage TIFF, JPEG
Scan Destination	Local USB (removable media), Mailboxes (local), SMB, FTP, Cloud
Original Size Width	11" - 36" / 210 mm to 914 mm
Original Thickness	0.05 mm - 1.60 mm (image quality over 0.25 mm thick cannot be guaranteed) Note: For KIP 790, 795 refer to KIP 2300 Scanner Specifications

\*ANSI Landscape mode



KIP is a registered trademark of the KIP Group. All other product names mentioned herein are trademarks of their respective companies.  
All product features and specifications are subject to change without notice. Complete product specifications are available at [www.kip.com](http://www.kip.com). © 2023

V05/23/23