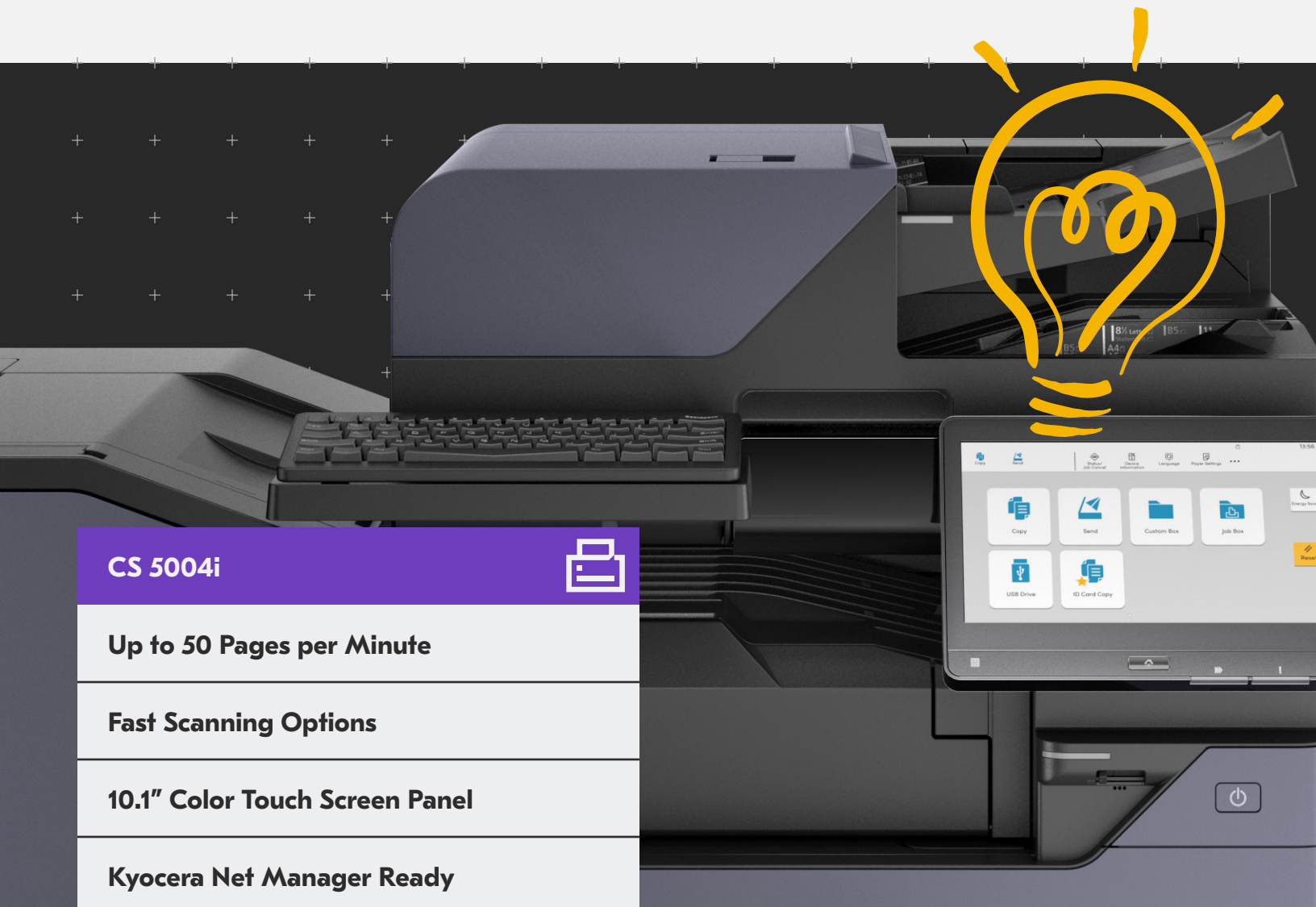


Your Workplace Evolution

These monochrome additions to the Copystar Evolution Series are designed to keep your costs low and your efficiency at its highest. With the latest security compliance, rapid print and scan speeds, and a more engaging user experience, they will optimize your workflows and maximize productivity. Join the Evolution today and keep your business at the cutting edge!



CS 5004i



Up to 50 Pages per Minute

Fast Scanning Options

10.1" Color Touch Screen Panel

Kyocera Net Manager Ready

BASIC SPECIFICATIONS

Configuration: BW MFP - Print/Scan/Copy/Optional Fax

Speed: Letter: 50 ppm, Legal: 30 ppm, Ledger: 25 ppm (print only)

Warm Up Time: 17 seconds or less (power on)

First Page Out:

Copy: 3.7 seconds

Print: 4.3 seconds

Display: 10.1" Color Touch Screen Control Panel

Memory/Hard Disk Drive: 4GB RAM/32GB SSD/320GB HDD Standard, 1TB HDD (option)

Duplex: Standard Stackless Duplex supports Statement (5.5" x 8.5") to Ledger (12" x 18"), 16 lb. Bond - 142 lb. Index (60 - 256gsm)

Standard Output Tray: Statement - 12" x 18"/500-sheets; up to 12" x 48" Banner (single sheet)

Electrical Requirements: 120V, 60Hz, 12A; 220-240V, 50/60Hz, 7.2A

Typical Electricity Consumption (TEC): 120V: .63 kWh/week; 220V: .60 kWh/week

Dimensions: 23.7" W x 26.1" D x 31.1" H

Weight: 182 lbs

Maximum Monthly Duty Cycle: 225,000 Pages per Month

PAPER SUPPLY

Paper Capacity: Standard 1,150-sheets; Maximum 7,150-sheets

Standard Paper Sources: Dual 500-sheet Trays, 150-sheet MPT, Auto Selection/Switching

Standard Paper Size:

Tray 1 - 5.5" x 8.5" - 8.5" x 14" (statement to legal)

Tray 2 - 5.5" x 8.5" - 12" x 18", Custom Size

MPT: 5.5" x 8.5" - 12" x 18" (multiple); to 12" x 48" Banner (single)

Optional Paper Sources:

PF-7140 Dual 500-sheet Tray Option - 5.5" x 8.5" - 12" x 18"

PF-7150 Dual 1,500-sheet Tray Option - 8.5" x 11"

PF-7120 3,000-sheet Large Capacity Tray Option - 8.5" x 11"

Paper Weight:

Trays/MPT: 14 lb. Bond - 166 lb. Index (52 - 300gsm)

Input Materials: Standard/Optional Trays: Plain, Bond, Recycled, Preprinted, Vellum, Color, Pre-Punched, Thick, Thin, High Quality, Letterhead, Envelope, Custom; MPT: Plain, Bond, Recycled, Preprinted, Vellum, Color, Pre-Punched, Thick, Thin, High Quality, Transparency (OHP), Coated, Index Tab, Label, Letterhead, Envelope, Custom

SECURITY SPECIFICATIONS

Local Authentication, Network Authentication, Encryption Communication (IPsec, HTTPS, TLS 1.3, LDAPS, SMTP/POP/FTP over TLS, SNMPv3), TPM chipset (Trusted Platform Module), S/MIME, SCEP (auto certificate issuance/renewal), OCSP/CRL (certificate validation), Secure Boot (firmware authenticity verification), Run Time Integrity Check, Data Security Kit 10 enhances IPsec communication (support for FIPS 140-2), HDD and Memory Overwrite (7x) Mode and HDD Data Encryption (256 bit), Common Criteria (ISO/IEC-15408/EAL2), IEEE 2600.2

PRINT SPECIFICATION

Standard Controller: ARM Cortex-A53/1.6GHz

PDLs/Emulations: PRESCRIBE, PCL6 (PCL-XL/PCL-5e), KPDL3 (PS3), XPS, OPEN XPS, PDF; Optional (UG 34): IBM ProPrinter, Line Printer, LQ-850

Print Resolution: Up to 4800 x 1200 dpi

Fonts: KPDL3, PCL6, Bitmap

OS Compatibility: Windows: 8.1/10/Server 2012/Server 2012 R2/Server 2016/Server 2019;

Mac OS X v10.0 or later; Chrome OS

Mobile Printing: Apple AirPrint®, Mopria®,

KYOCERA Mobile Print, KYOCERA MyPanel

Interfaces: Standard: 1000 Base-T/100-Base-Tx/10BASE-T (IPv6, IPv4, IPsec), 802.3az ready, High-Speed USB 3.0,

4 USB 2.0 Host Interfaces, 2 Expansion Slots,

IEEE 802.11b/g/n Wireless LAN (supports up to 98.5 feet);

Optional: IEEE 802.11a/b/g/n/ac (**IB-37** for 2.4/5GHz),

10/100/1000BaseTX (**IB-50** for Dual NIC); IEEE 802.11b/g/n

(**IB-51** for Wireless LAN interface (supports up to 328.1 feet))

Network Print and Supported Protocols: HTTPS, FTPS, SNMP

v1/v2c/v3, Raw Port (Port 9100) TCP/IP, IPv4, IPv6, DHCP LPR,

DNS, WSD Scan/Print

Drivers: KX Driver, PCL Mini Driver, KPDL Mini Driver,

Network Fax Driver, TWAIN Driver, WIA Driver, Status Monitor,

Common Profile, Output to PDF, Security Watermark, Super

Resolution, Color Optimizer, MAC Driver, Chrome Print Driver,

Linux Driver, KX Driver with Distributed Printing,

Windows Inbox Driver, SANE Driver

Utilities: KYOCERA Net Viewer, KYOCERA Net Device

Manager, Quick Setup, KX PRESCRIBE Macro Generator,

ID Register, Software Management Service, Upgrade Studio,

Web Package Maker, Removal Tool, Wi-Fi Setup Tool,

PDF Direct Print, Command Center RX;

Kyocera Net Manager (option)

SCAN SPECIFICATION

Scan Type: Color and Black & White Scanner

Scan Resolution: 600/400/300/200 dpi, 200 x 100 dpi, 200 x 400 dpi

File Formats: TIFF, JPEG, XPS, OpenXPS, PDF/A-2.0

(MMR/JPG Compression/High Compression PDF); Option:

Scan Extension Kit Text Searchable PDF; MS Office File

Connectivity/Supported Protocols: 10 BASE-T/100

BASE-TX/1000 BASE-T (IPv6, IPv4, IPsec) TCP/IP,

Hi-Speed USB 3.0

Scanning Functions: Scan-to-Folder (SMBv3), Scan-to-Email,

Scan-to-FTPS over TLS, Scan-to-USB, PDF Digital Signatures,

WSD Scan, DSM/SANE Scan, TWAIN Scan, Specified Color

Removal, Border Erase, Preview

Original Size: Up to 11" x 17" (Glass)

Drivers: TWAIN/WIA/DSM-SANE Driver/WSD Scan

OPTIONAL DOCUMENT PROCESSORS²

Acceptable Originals: 5.5" x 8.5" - 11" x 17"

DP-7150: Reverse Auto Document Processor/140-sheets

Speed: Simplex: 80 ipm; Duplex: 48 ipm (BW/Color)

Weight: Simplex: 13 lb. Bond - 90 lb. Index (35 - 160gsm)

Duplex: 16 lb. - 32 lb. Bond (50 - 120gsm)

DP-7160 (with multi-feed detection):

Dual Scan Document Processor/320-sheets

Speed: Simplex: 137 ipm; Duplex: 274 ipm (BW/Color)

Weights: Simplex: 13 lb. Bond - 120 lb. Index (35 - 220gsm)

Duplex: 16 lb. - 120 lb. Index (50 - 220gsm)

DP-7170 (with multi-feed and staple detection):

Dual Scan Document Processor/320-sheets

Speed: Simplex: 137 ipm; Duplex: 274 ipm (BW/Color)

Weights: Simplex: 13 lb. Bond - 120 lb. Index (35 - 220gsm)

Duplex: 16 lb. - 120 lb. Index (50 - 220gsm)

COPY SPECIFICATIONS

Copy Resolution: 600 x 600 dpi

Image Mode: Text, Photo, Text/Photo, Graphic/Map

Continuous Copy: 1 - 9,999

Additional Features: Auto Magnification, Auto Paper Select,

Combine Copy, Mirror Image, Rotate Copy, Border Erase,

Split Copy, Margin Shift, Page Number, Form Overlay,

Blank Page Skip, Specified Color Removal, Proof Copy,

Preview, ID Card Copy

Job Management: 1,000 User Codes, Job Build, Shortcut Keys,

Repeat Copy

Magnification/Zoom: Full Size, 4 Reduction, 4 Enlargement

Preset Ratios, 25 - 400% in 1% Step Increments

Document Box: Custom/Job/USB Drive Box, Fax Box

(w/option)

OPTIONAL FAX SPECIFICATIONS

Fax Type: Fax System 12 (option)

Type/Data Compression: G3 Fax/MMR, MR, MH, JBIG

Transmission Speed/Modem Speed: Less than

3 seconds/33.6 Kbps

Fax Memory: Standard 170 MB

Drivers: Network Fax Driver

Fax Functions: Network Fax, Duplex Transmission and

Reception, Encrypted Transmission and Reception,

Polling Transmission and Reception, Broadcast,

Fax Server Integration, Fax Dedicated Paper Feed Tray,

Fax Forwarding to email or file

arding to email or file

SOLUTIONS AND SERVICES**Remote Management**

Kyocera Fleet Services ready! A highly secure cloud-based monitoring solution that offers real-time visibility into your fleet. Optimize device uptime and be notified when to replenish supplies. Streamline billing with seamless 3rd party application integration, allowing you to focus solely on your business.

Printing Software

Cost Control & Security

Cloud & Mobile

Printer Management

Content Services

Scan & Connect

Intelligent Process Automation

Enterprise Content Management

IT Solutions

Technology Solutions

Including solutions for Cloud and Data Centers

Network Infrastructure

Cybersecurity Solutions

Collaboration Solutions

Consulting Services

Including IT Health Check

CIO as a Service

Healthcare Compliance

Backup and Recovery Planning

Professional Services

Including Design and Architecture

Project Implementation

Project Management

Managed Services

Including Help Desk Services

Retainer Services and On-site Support

Output & Finishing Options³

OPTIONAL 250 SHEET INNER SHIFT TRAY JS-7100

Stack Capacity: 250-sheets

Paper Size: 8.5" x 11" – 11" x 17"

Paper Weight: 14 lb. Bond – 166 lb. Index (52 – 300gsm)

OPTIONAL 500 SHEET INTERNAL FINISHER DF-7100⁴

Stack/Staple Capacity: 500-sheets/50-sheets

Paper Size: 5.5" x 8.5" – 12" x 18"

Paper Weight: 14 lb. Bond – 166 lb. Index (52 – 300gsm)

Edge Staple Position: 3 Positions: Front: 1 Staple,

Edge: 1 Staple, Face: 2 Staples

Optional Punch: PH-7100 2/3 Hole Punch Unit,

supports 5.5" x 8.5" – 12" x 18"; 14 lb. Bond – 166 lb. Index

Dimensions: 19.4" W x 21" D x 6.9" H

OPTIONAL 1,000 SHEET FINISHER DF-7120⁴

Stack/Staple Capacity: Main Tray: 1,000-sheets/50-sheets (up to 24 lb. Bond [90gsm])

Paper Size: 5.5" x 8.5" – 12" x 18"

Paper Weight: 14 lb. Bond – 166 lb. Index (52 – 300gsm)

Edge Staple Position: 3 Positions: Top Left, Bottom Left, Center Bind

Optional Punch: PH-7A 2/3 Hole Punch Unit, supports 5.5" x 8.5" – 12" x 18"; 14 lb. Bond – 166 lb. Index

Dimensions: 21.6" W x 24.4" D x 41.3" H

OPTIONAL 4,000 SHEET FINISHER DF-7140⁴

Stack/Staple Capacity: Main Tray (A): 4,000-sheets;

Sub Tray (B): 200-sheets/65-sheets (24 lb. Bond [90gsm])

Paper Size: 5.5" x 8.5" – 12" x 18"

Paper Weight: 14 lb. Bond – 166 lb. Index (52 – 300gsm)

Edge Staple Position: 3 Positions: Top Left, Bottom Left, Center Bind

Optional Punch: PH-7A 2/3 Hole Punch Unit, supports 5.5" x 8.5" – 12" x 18"; 14 lb. Bond – 166 lb. Index

Dimensions: 29" W x 26" D x 42" H

Optional Booklet Folder/Trifold Unit BF-730: (DF-7140)

Booklet Folder: supports 8.5" x 11", 8.5" x 14", 11" x 17"

Fold Booklet (staple): 16 lb. – 24 lb. Bond (60 – 90gsm)

20-sheets; 25 lb. – 28 lb. Bond (91 – 105gsm) 13-sheets;

Higher than 28 lb. Bond (Higher than 105 gsm) 1-sheet

Fold Booklet (no staple): 16 lb. – 24 lb. Bond (60 – 90gsm)

5-sheets; 25 lb. Bond – 72 lb. Index (91 – 120gsm) 3-sheets;

32 lb. Bond – 110 lb. Cover (121 – 256gsm) 1-sheet

Trifold: supports 8.5" x 11" only: 16 lb. – 24 lb. Bond

(60 – 90gsm) 5-sheets; 25 lb. Bond – 72 lb. Index

(91 – 120gsm) 3-sheets

Optional Multi-Bin Mailbox MT-730(B): (DF-7140)

7 Trays; supports: 16 lb. Bond – 90 lb. Index (60 – 163gsm);

Stack Capacity per bin: 100-sheets: 5.5" x 8.5", 8.5" x 11";

50-sheets: 8.5" x 14", 11" x 17"

OPTIONAL 4,000 SHEET FINISHER DF-7150⁴

Stack/Staple Capacity: Main Tray (A): 4,000-sheets;

Sub Tray (B): 200-sheets/100-sheets (up to 20lb. Bond [80gsm])

Paper Size: 5.5" x 8.5" – 12" x 18"

Paper Weight: 14 lb. Bond – 166 lb. Index (52 – 300gsm)

Edge Staple Position: 3 Positions: Top Left, Bottom Left,

Center Bind

Optional Punch: PH-7A 2/3 Hole Punch Unit,

Supports 5.5" x 8.5" – 12" x 18"; 14 lb. Bond – 166 lb. Index

Dimensions: 29" W x 26" D x 42" H

Optional Booklet Folder/Trifold Unit BF-9100: (DF-7150)

Booklet Folder: supports 8.5" x 11", 8.5" x 14", 11" x 17"

Fold Booklet (staple): 14 lb. – 24 lb. Bond (52 – 90gsm)

20-sheets; 25 lb. – 28 lb. Bond (91 – 105gsm) 13-sheets;

Higher than 28 lb. Bond (Higher than 105 gsm) 1-sheet

Fold Booklet (no staple): 14 lb. – 24 lb. Bond (52 – 90gsm)

5-sheets; 24 lb. Bond – 28 lb. Index (91 – 105gsm) 3-sheets;

28 lb. Bond – 140 lb. Index (106 – 256gsm) 1-sheet

Trifold: supports 8.5" x 11" only: 14 lb. – 24 lb. Bond

(52 – 90gsm) 5-sheets; 25 lb. Bond – 28 lb. Index

(91 – 105gsm) 3-sheets

ADDITIONAL OPTIONS

AK-7110 Bridge Unit Attachment Kit, JS-7100 Job Separator, HD-16 Large Capacity HDD (1TB), Banner Guide 10, Internet Fax Kit (A), Card Authentication Kit (B), Data Security Kit 10. Dual NIC (IB-50), Extended Range Wireless LAN NIC (IB-51), Thin Print option (UG-33), Printer Emulation option (UG-34), DT-730(B) Document Tray, Scan Extension Kit (A) for Text Searchable PDF; MS Office File, Keyboard Holder 10, Numeric Keypad (NK-7130), Cabinet Stand

¹ Requires PF-7140

² Only 1 Document Processor can be installed

³ Only 1 Output Option can be installed

⁴ Requires Bridge Unit Attachment Kit (AK-7110)

Specifications and design are subject to change without notice. For the latest on connectivity visit copystar.com. CS, PRESCRIBE, Kyocera Net Manager, Kyocera Net Viewer, Kyocera Device Manager, PDF Direct Print, Command Center RX, and KX Driver are trademarks of The Kyocera Companies. Mac OS and AirPrint are trademarks of Apple, Inc. Mopria is a trademark of Mopria Alliance, Inc. Windows is a trademark of Microsoft, Inc. All other trademarks are the property of their respective owners.



An All Florida Technologies, Inc Company

1-800-407-STAT (7828)
www.statbusiness.com

Copystar Partner

KYOCERA Document Solutions America
 225 Sand Road, PO Box 40008
 Fairfield, New Jersey 07004-0008, USA
 Tel: 973-808-8444

COPYSTAR

KYOCERA TECHNOLOGY

copystar.com

Kyocera Document Solutions does not warrant that any specifications mentioned will be error-free. Specifications are subject to change without notice. Information is correct at time of going to press.

All other brand and product names may be registered trademarks or trademarks of their respective holders and are hereby acknowledged.

©2021 KYOCERA Document Solutions America, Inc.